

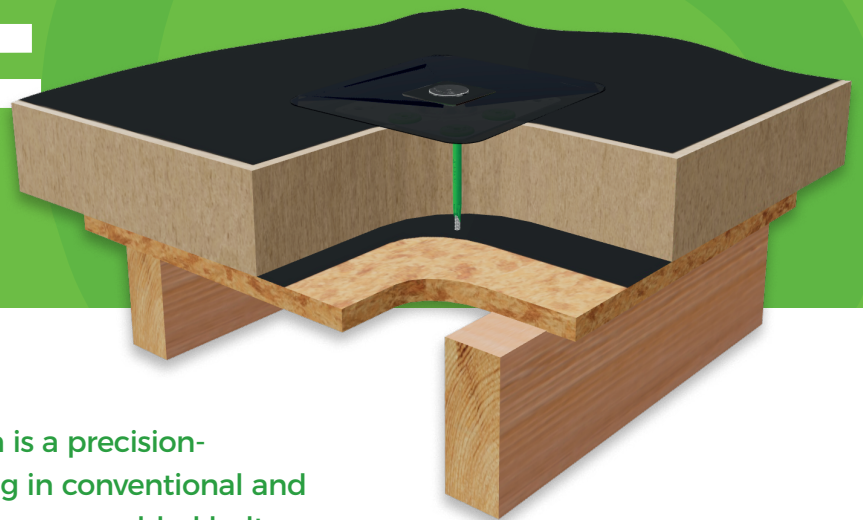


**RENEW**

SKU\_CHT\_APB\_X1

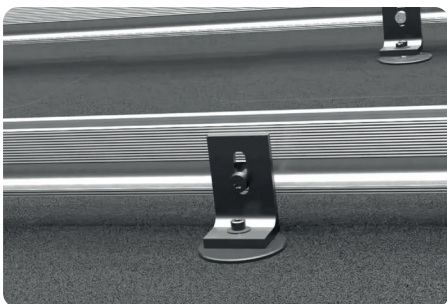
FLAT ROOF MOUNTING SYSTEM

# ANCHOR PLATE



The Anchor Plate Roof Mounting System is a precision-engineered solution for mechanical fixing in conventional and warm roof applications. Featuring a factory-assembled bolt with an internal bore seal, it provides a complete environmental barrier and consistent performance. Pre-tensioned to exact torque settings, the system ensures long-term structural integrity, weatherproofing, and reliability.

**12 YEARS**  
WARRANTY  
★★★★★



#### KEY TECHNICAL FEATURES:

- Factory-assembled and pre-tensioned for consistent performance
- Integrated internal bore seal for superior environmental protection
- Precision-engineered mounting bolt
- Compatible with multiple roof membrane types
- Robust construction ensures durability and longevity

#### APPLICATIONS:

- Suitable for cold and warm roof constructions
- Ideal for securing roof-mounted signage, plant supports, and safety systems

#### INSTALLATION:

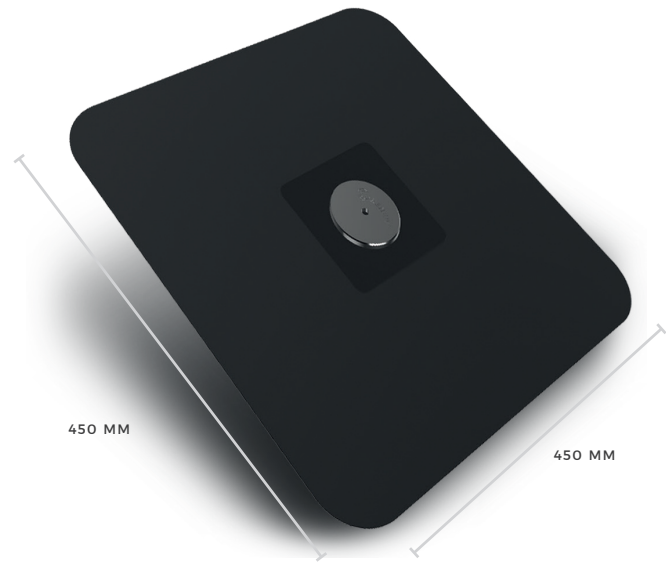
- Secure through membrane into substrate using suitable fasteners and washers.
- Verify compatibility and follow manufacturer guidelines to maintain warranty.

DESIGNED BY INSTALLER FOR INSTALLERS

01273 033 520  
[www.renew-store.co.uk](http://www.renew-store.co.uk)

FLAT ROOF MOUNTING SYSTEM

# ANCHOR PLATE

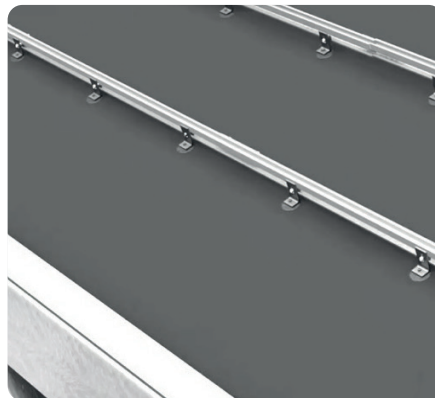
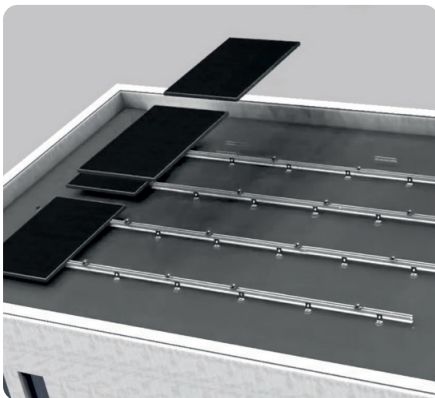


**KEY FEATURES:**

Precision-machined bolt with calibrated torque setting

Integrated sealing mechanism for weatherproofing

Designed for mechanical fixing across various roof types



**CONSTRUCTION:**

**Base Plate:**  
3 mm powder-coated steel

**Base Dimensions:**  
450x450 mm

**Height:** 45 mm

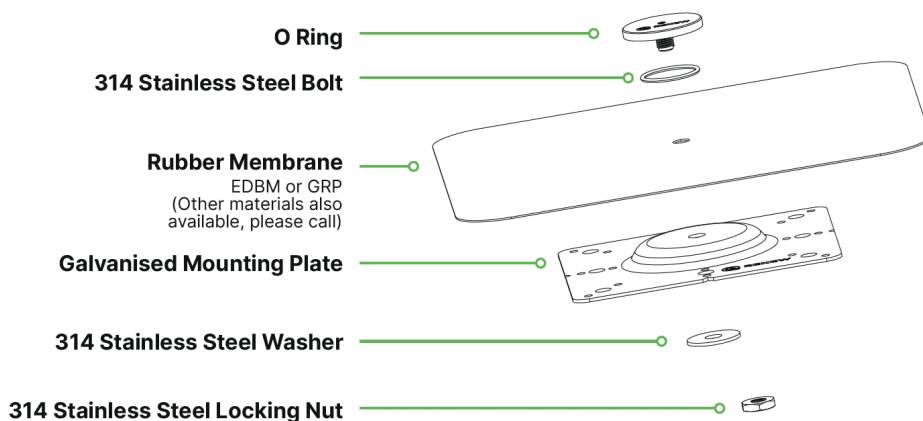
**Weight:** ~3 kg

**Stainless Steel Connector:** Two M10 x 20 mm female threads

**Supplied as a factory:**  
assembled unit (modifications void warranty)

**COMPATIBILITY:**

- Suitable for cold and warm roof constructions
- Ideal for securing roof-mounted signage, plant supports, and safety systems



**SIMPLER  
FASTER  
SMARTER**

DESIGNED BY INSTALLER FOR INSTALLERS

**01273 033 520**

[www.renew-store.co.uk](http://www.renew-store.co.uk)