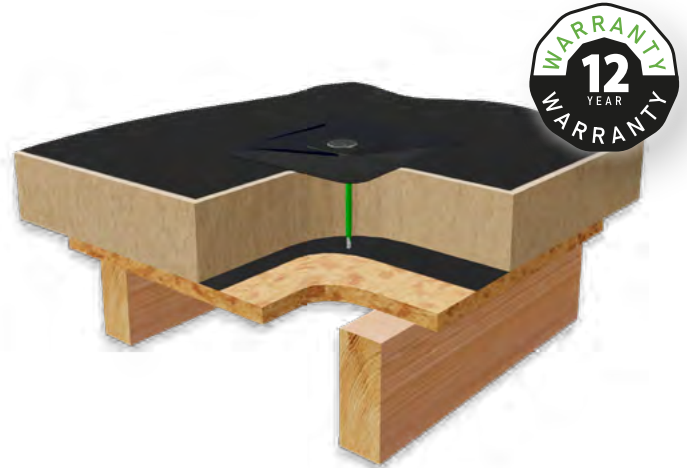


### FLAT ROOF MOUNTING SYSTEM

# ANCHOR PLATE

The Anchor Plate Roof Mounting System is a precision-engineered solution for mechanical fixing in conventional and warm roof applications. Featuring a factory-assembled bolt with an internal bore seal, it provides a complete environmental barrier and consistent performance. Pre-tensioned to exact torque settings, the system ensures long-term structural integrity, weatherproofing, and reliability.



#### Key technical features include:

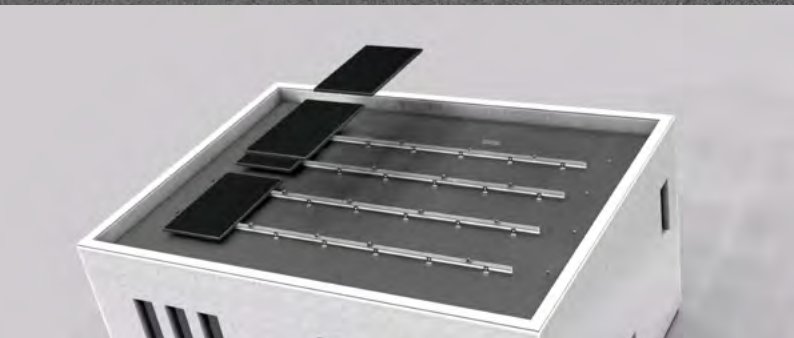
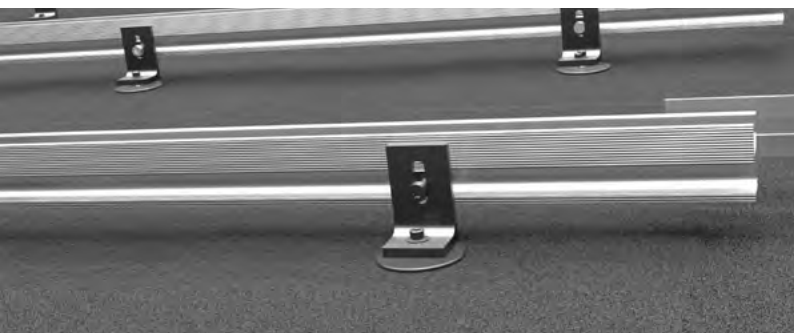
- Factory-assembled and pre-tensioned for consistent performance
- Integrated internal bore seal for superior environmental protection
- Precision-engineered mounting bolt
- Compatible with multiple roof membrane types
- Robust construction ensures durability and longevity

#### Applications:

- Suitable for cold and warm roof constructions
- Ideal for securing roof-mounted signage, plant supports, and safety systems

#### Installation:

- Secure through membrane into substrate using suitable fasteners and washers.
- Verify compatibility and follow manufacturer guidelines to maintain warranty.

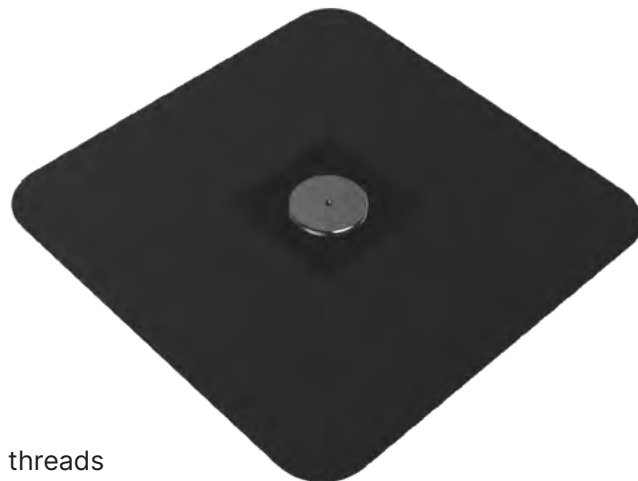


### FLAT ROOF MOUNTING SYSTEM

# ANCHOR PLATE

#### Construction:

- Base Plate: 3 mm powder-coated steel
- Base Dimensions: 450 × 450 mm
- Height: 45 mm
- Weight: ~3 kg
- Stainless Steel Connector: Two M10 × 20 mm female threads
- Supplied as a factory-assembled unit (modifications void warranty)



#### Compatibility:

- EPDM Rubber Roofs
- GRP, Felt, and Single-ply Membranes
- Bituminous (SBS & APP) and Liquid-applied Systems
- Suitable for plywood and timber roof decks

#### Key Features:

- Precision-machined bolt with calibrated torque setting
- Integrated sealing mechanism for weatherproofing
- Designed for mechanical fixing across various roof types

